

(Mouse) Msi1 Antibody (Center)
Purified Rabbit Polyclonal Antibody (Pab)
Catalog # AP20967a

Specification

(Mouse) Msi1 Antibody (Center) - Product Information

Application	WB,E
Primary Accession	Q61474
Other Accession	Q8K3P4 , Q43347
Reactivity	Human, Mouse
Predicted	Rat
Host	Rabbit
Clonality	Polyclonal
Isotype	Rabbit IgG
Calculated MW	39119

(Mouse) Msi1 Antibody (Center) - Additional Information

Gene ID 17690

Other Names

RNA-binding protein Musashi homolog 1, Musashi-1, Msi1, Msi1h

Target/Specificity

This mouse Msi1 antibody is generated from a rabbit immunized with a KLH conjugated synthetic peptide between 81-113 amino acids from the Central region of mouse Msi1.

Dilution

WB~~1:1000

E~~Use at an assay dependent concentration.

Format

Purified polyclonal antibody supplied in PBS with 0.09% (W/V) sodium azide. This antibody is purified through a protein A column, followed by peptide affinity purification.

Storage

Maintain refrigerated at 2-8°C for up to 2 weeks. For long term storage store at -20°C in small aliquots to prevent freeze-thaw cycles.

Precautions

(Mouse) Msi1 Antibody (Center) is for research use only and not for use in diagnostic or therapeutic procedures.

(Mouse) Msi1 Antibody (Center) - Protein Information

Name Msi1

Synonyms Msi1h

Function RNA binding protein that regulates the expression of target mRNAs at the translation level. Regulates expression of the NOTCH1 antagonist NUMB. Binds RNA containing the sequence 5'-GUUAGUUAGUUAGUU- 3' and other sequences containing the pattern 5'-[GA]U(1-3)AGU-3'. May play a role in the proliferation and maintenance of stem cells in the central nervous system.

Cellular Location

Cytoplasm. Nucleus

Tissue Location

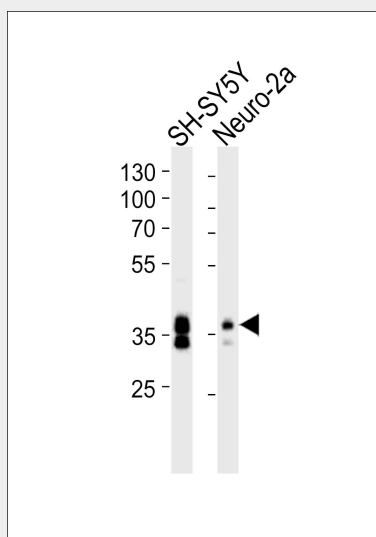
Expressed in neural stem and progenitor cells (at protein level) (PubMed:16554442). Detected in olfactory bulb, brain stem, small intestine, and at low levels in brain cortex, hippocampus and ovary (PubMed:8660864). Detected in neural progenitor cells, including neural stem cells (PubMed:8660864)

(Mouse) Msi1 Antibody (Center) - Protocols

Provided below are standard protocols that you may find useful for product applications.

- [Western Blot](#)
- [Blocking Peptides](#)
- [Dot Blot](#)
- [Immunohistochemistry](#)
- [Immunofluorescence](#)
- [Immunoprecipitation](#)
- [Flow Cytometry](#)
- [Cell Culture](#)

(Mouse) Msi1 Antibody (Center) - Images



Western blot analysis of lysates from SH-SY5Y, Neuro-2a cell line (from left to right), using (Mouse) Msi1 Antibody (Center)(Cat. #AP20967a). AP20967a was diluted at 1:1000 at each lane. A goat anti-rabbit IgG H&L(HRP) at 1:10000 dilution was used as the secondary antibody. Lysates at 20ug per lane.

(Mouse) Msi1 Antibody (Center) - Background

RNA binding protein that regulates the expression of target mRNAs at the translation level.

Regulates expression of the NOTCH1 antagonist NUMB. Binds RNA containing the sequence 5'-GUUAGUUAGUUAGUU-3' and other sequences containing the pattern 5'-[GA]U(1-3)AGU-3'. May play a role in the proliferation and maintenance of stem cells in the central nervous system.

(Mouse) Msi1 Antibody (Center) - References

Sakakibara S.,et al.Dev. Biol. 176:230-242(1996).
Carninci P.,et al.Science 309:1559-1563(2005).
Imai T.,et al.Mol. Cell. Biol. 21:3888-3900(2001).
Sakakibara S.,et al.Proc. Natl. Acad. Sci. U.S.A. 99:15194-15199(2002).
Nagata T.,et al.J. Mol. Biol. 287:315-330(1999).